

The Victorian Gazebo Assembly Instruction
By Laser Dollhouse Designs



Step 1. locate the Base as seen in Figure 1 and flip upside down

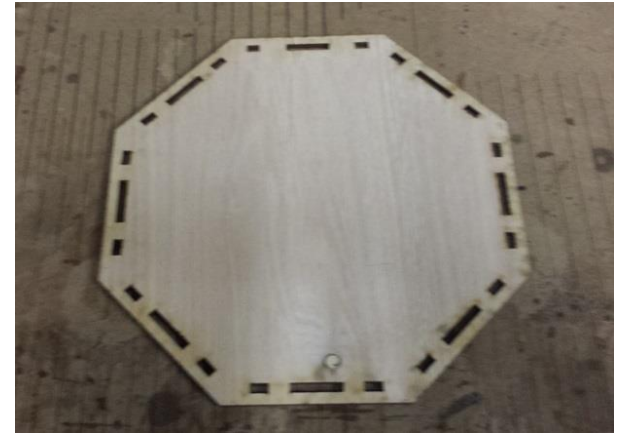


Figure 1

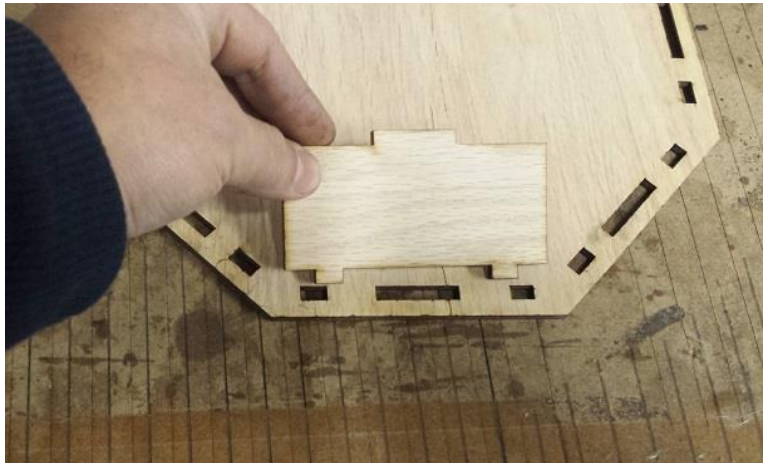


Figure 2

Step 2. Take one base support and find on the base floor the single wide cutout where it does not fit into the outside notches and face that toward you, see figure 2.

Step 3. Locate the base support with our company name and insert to the rear as seen in figure 3



Figure 3

Step 4. Locate the base support with only center tabs and place in front slot. See figure 4

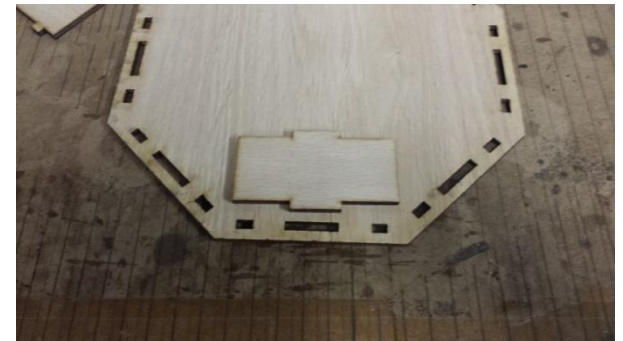


Figure 4



Figure 5

Step 5. Place the remaining base supports into the outer slots making sure that the center tab only side faces up. See figure 5.

Step 6. Locate the gazebo lower base. See figure 6



Figure 6



Figure 7

Step 7. Align and install base to assembled upper base and supports as seen in figure 7

Step 8. Rotate assembled base right side up as seen in figure 8.



Figure 8

Step 9. Insert front gazebo entrance rail. Refer to figure 9.



Figure 9

Step 10. Add remaining gazebo support railings as in figure 10.



Figure10

Step 11. Locate gazebo roof support making sure to install with center cutout running vertically as seen in figure 11.



Figure11

Step12. Install roof base again making sure that the center runs aligned to the entrance. See figures 12



Figure12

Step13. Install gazebo center roof and topper support. See figures 13



Figure13

Step 14. Install center roof alignment guide
see figure 14

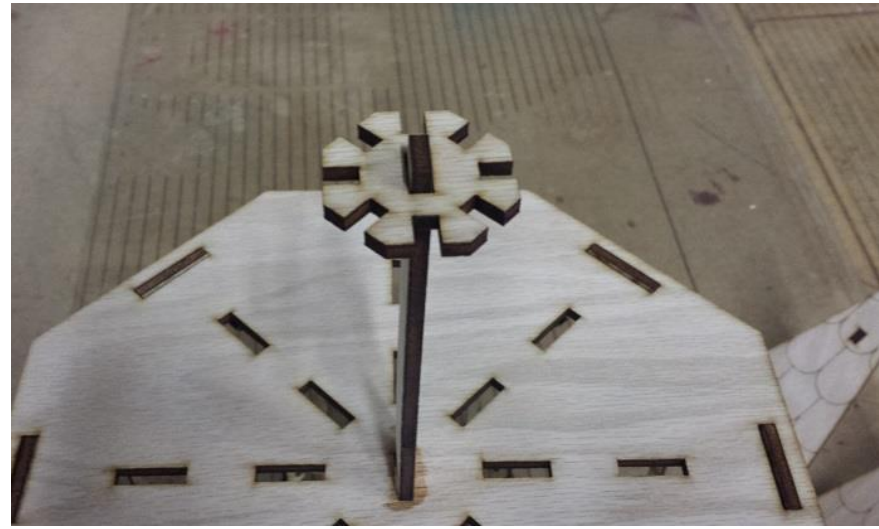


Figure14

Step 15. Glue roof base supports to roof
backs as seen figure 15



Figure15

Step 16. Install roof assemblies to roof base as seen in figure 16

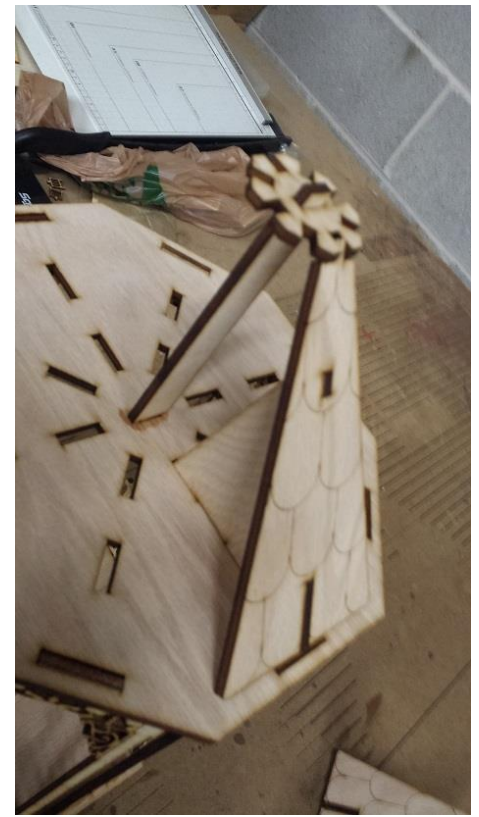


Figure16

Step 16. Align and glue roof in place making sure your 8 assemblies are evenly spaced as seen in figure 17

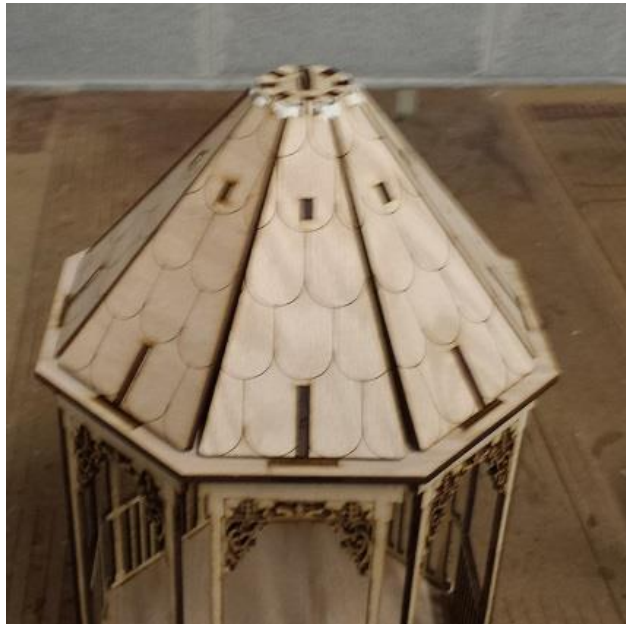


Figure17

Step 18. Install gazebo décor topper as seen in figure 18

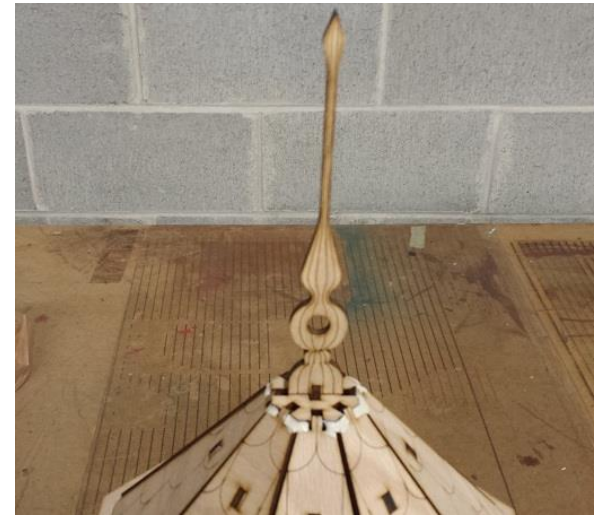


Figure18

Step 19. Install gazebo roof skirt rails as seen in figure 19



Figure19

Step 20. Assembly stairs as seen in figure 20

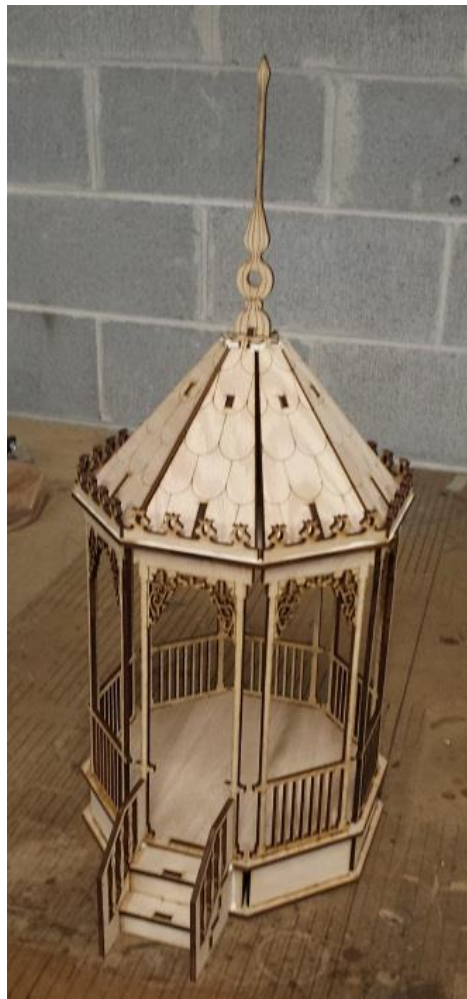
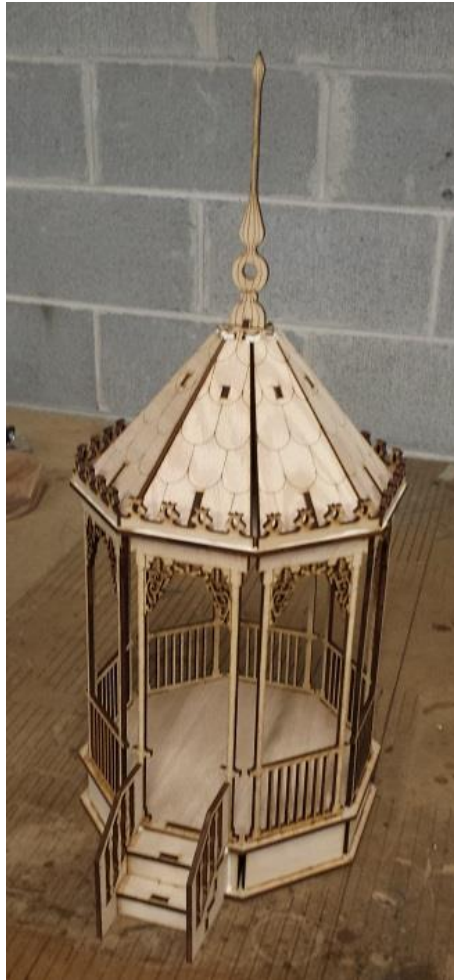


Figure21



Figure20

Step 21. Install stairs to front of gazebo as seen in figure 21, Assembly complete.



Laser Dollhouse Designs

www.laserdollhouses.com

Email: laserdollhouses@aol.com